



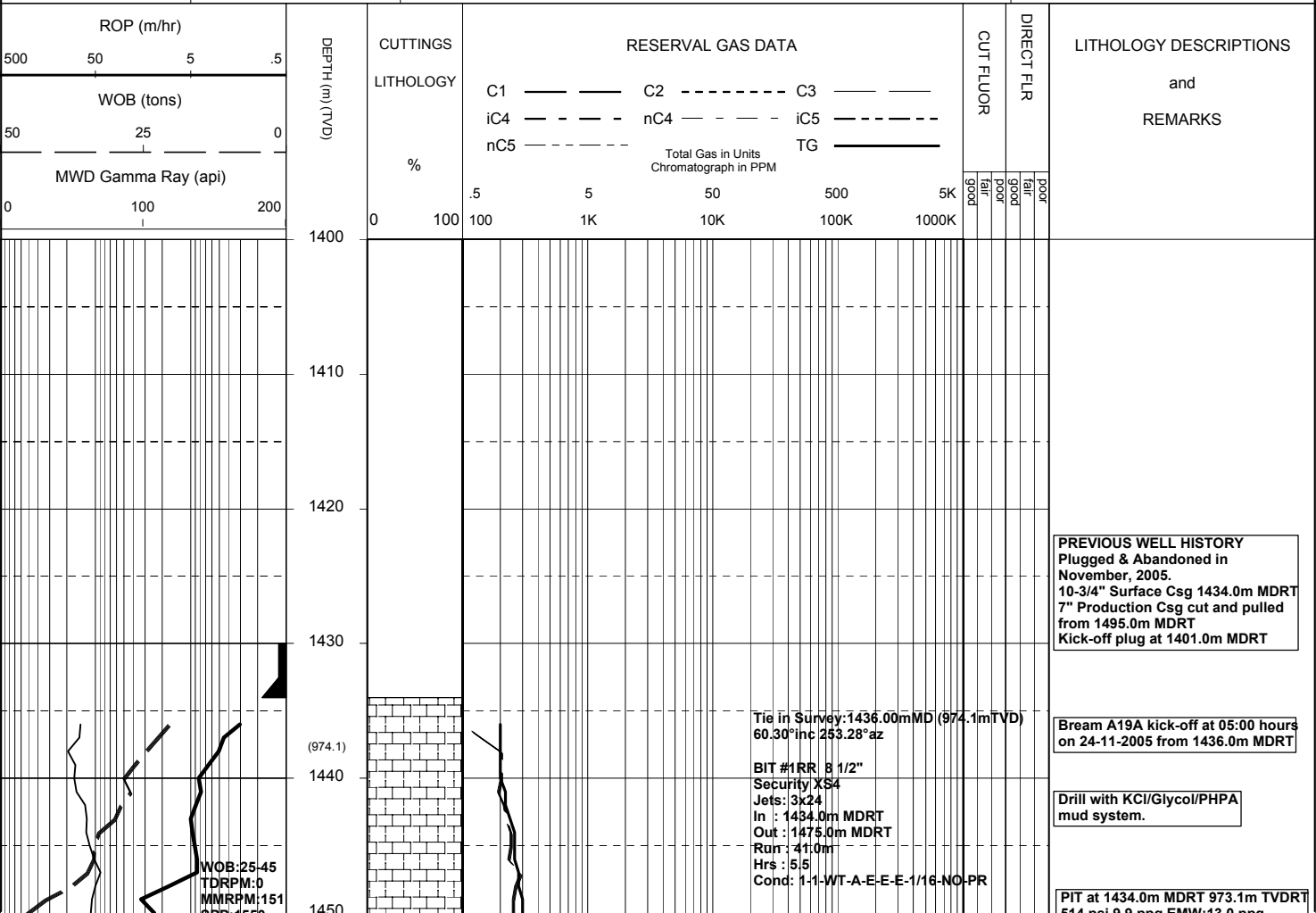
# MASTERLOG

## BMA A19A



GENERAL	SURFACE POSITON	HOLE / CASING INFO	DATE / DEPTH	ENGINEERS
Country : AUSTRALIA	GDA Co-ord X : 147 46 19.968 E	8-1/2" Hole to	Kick Off Date : 24-11-2005	Steve Oades
Permit : VIC L13	GDA Co-ord Y : 38 29 58.893 S		Total Depth Date : 28-11-2005	Mark Smith
Field : Bream	MGA Co-ord X : 567336.12mE	10-3/4" Casing Shoe at 1434.0m MDRT	Total Depth : 2804.0m	
Basin : GIPPSLAND	MGA Co-ord Y : 5738458.22mN	7" Production Csg at	True Vertical Depth : 2020.94m	
Well Type : DEVELOPMENT	RT to MSL : 32.82m		Log Scale : 1/ 500	
Rig Name : NABORS 453	RT to Sea Bed : 92.22m			

ABBREVIATIONS	LITHOLOGY LEGEND	ENGINEERING LEGEND
MW Mud Weight WOB Weight on Bit (klbs) RV Funnel Viscosity RPM Rotations Per Min PV Plastic Viscosity FLW Flow Rate (gpm) YP Yield Point SPP Pump Pressure (psi) Gel Gel Strength RR Re-Run Bit WL Water Loss TG Trip Gas KCl Potassium Chloride CG Connection Gas Cl Chlorides BG Background Gas Incl Inclination DGP Drilled Gas Peak Az Azimuth MM Mud Motor	CLAYSTONE SILTSTONE SST: F - V FINE SST: MEDIUM SST: COARSE SHALE MARL LIMESTONE DOLOMITE CHERT CONGLOMERATE COAL BRYOZOA RADIOLARITES ECHINOIDS CORALS FORAMINIFERA LITHIC FRAGMENT	CARB FRAGMENT QUARTZITE INTRUSIVES GLAUCONITE PYRITE CEMENT CASING SHOE LINER HANGER BIT CHANGE DEVI. SURVEY SWC UNRECOV SIDEWALL CORE WIRELINE LOGS MDT POINTS: PRESSURE ONLY SAMPLE SEAL FAILURE TIGHT CORE



SPP: 1530  
FLW: 520

Lakes Entrance  
1454.5m MDRT 983.2m TVDRT  
(-950.4m TVDSS)

(984)  
1460  
1470  
(993.9)  
1480  
1490  
(1004.1)  
1500  
25-11-05  
1510  
(1014.6)  
1520  
1530  
(1025.6)  
1540  
1550  
(1037.1)  
1560  
1570  
(1048.8)  
1580

WOB: 20-25  
TDRPM: 60  
MMRPM: 173  
SPP: 2000  
FLW: 600

WOB: 5-25  
TDRPM: 0-60  
MMRPM: 172  
SPP: 2000  
FLW: 590

MW: 9.85  
FV: 70  
PV: 20  
YP: 33  
Gel: 10/15  
WI: 4.2  
pH: 11  
Cl: 45.5k

WOB: 10-25  
TDRPM: 0-60  
MMRPM: 172  
SPP: 2050  
FLW: 590

WOB: 10-50  
TDRPM: 0-60  
MMRPM: 171  
SPP: 2100  
FLW: 580

100 % C1

1478.37mMD (995.03mTVD)  
60.56°inc 264.30°az

BIT #2 8 1/2"  
Smith S73PX  
Jets: 6x20  
In : 1475.0m MDRT  
Out : 2804.0m MDRT  
Run : 1329.0m  
Hrs : 37.5  
Cond:

99 / 1 / Tr

1512.46mMD (1012.3mTVD)  
57.35°inc 266.35°az

97 / 2 / 1

1541.14mMD (1028.2mTVD)  
55.51°inc 267.56°az

98 / 1 / 1

1570.44mMD (1045.4mTVD)  
53.70°inc 273.57°az

97 / 2 / 1

CALCAREOUS CLAYSTONE: med gy-  
med dk gy, stly, mod calc, tr dissem py  
tr foss frag, rr glauc, frm-mod hd,  
sbbiky-blky.

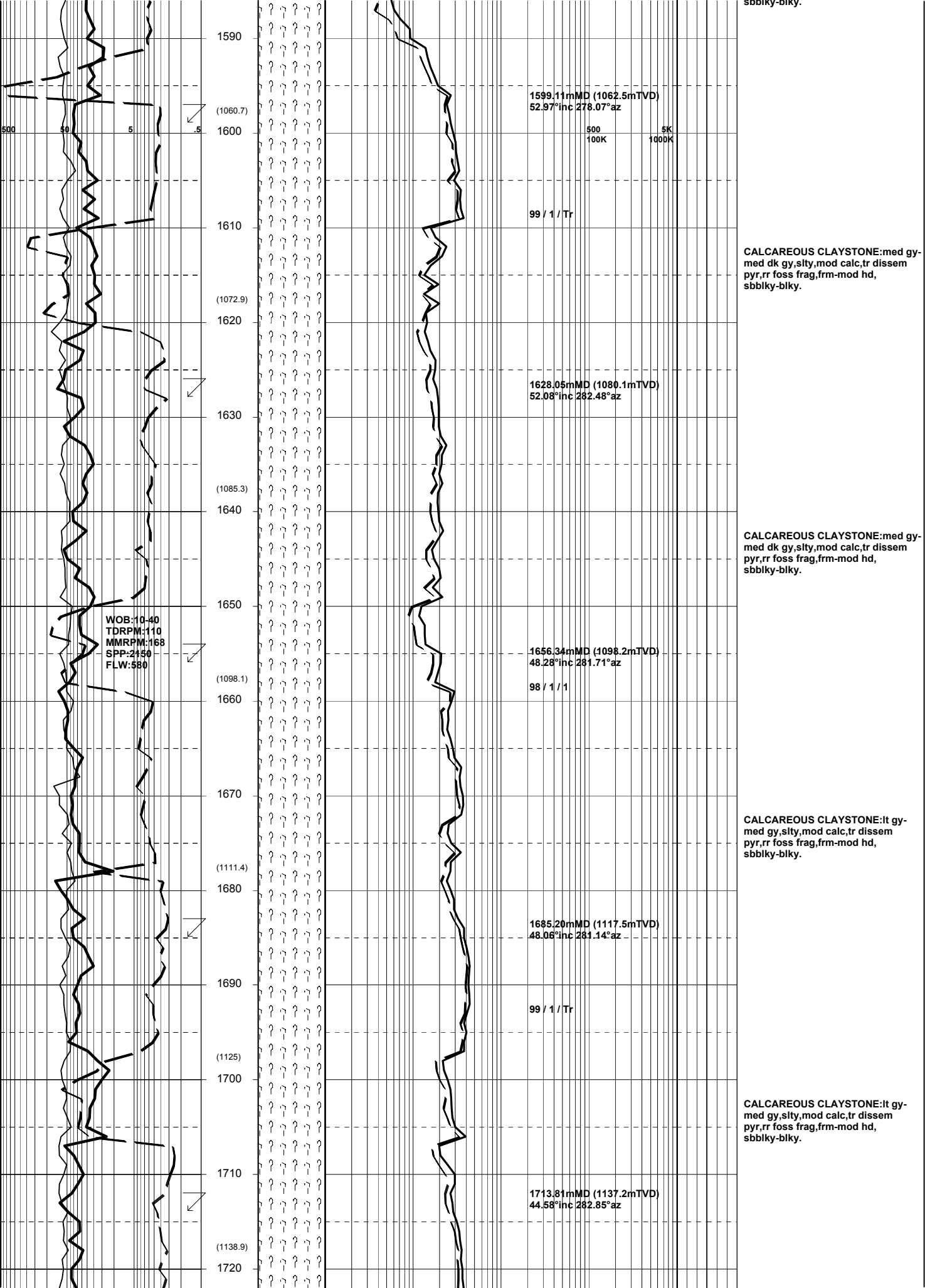
CALCAREOUS CLAYSTONE: med gy-  
med dk gy, stly, mod calc, tr dissem py  
tr foss frag, rr glauc, frm-mod hd,  
sbbiky-blky.

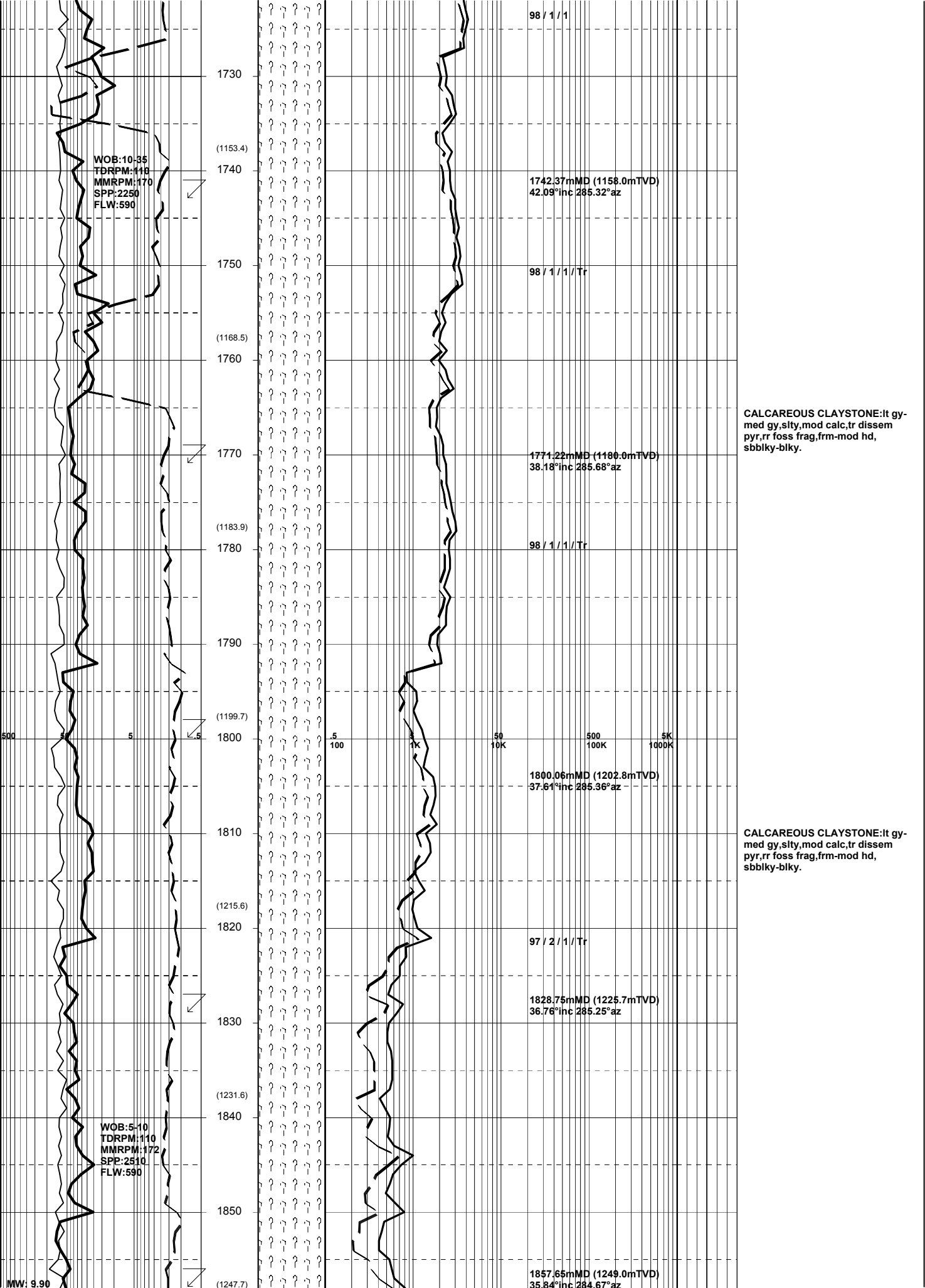
CALCAREOUS CLAYSTONE: med gy-  
med dk gy, stly, mod calc, tr dissem py  
tr foss frag, rr glauc, frm-mod hd,  
sbbiky-blky.

CALCAREOUS CLAYSTONE: med gy-  
med dk gy, stly, mod calc, tr dissem py  
tr foss frag, rr glauc, frm-mod hd,  
sbbiky-blky.

CALCAREOUS CLAYSTONE: med gy-  
med dk gy, stly, mod calc, tr dissem py  
tr foss frag, rr glauc, frm-mod hd,  
sbbiky-blky.

CALCAREOUS CLAYSTONE: med gy-  
med dk gy, stly, mod calc, tr dissem py  
tr foss frag, rr glauc, frm-mod hd,  
sbbiky-blky.





98 / 1 / 1

1730

(1153.4)

1740

WOB:10-35  
TDRPM:148  
MMRPM:170  
SPP:2250  
FLW:590

1742.37mMD (1158.0mTVD)  
42.09°inc 285.32°az

1750

98 / 1 / 1 / Tr

(1168.5)

1760

CALCAREOUS CLAYSTONE:lt gy-med gy,silty,mod calc,tr dissempyr,rr foss frag,frm-mod hd, sbbiky-biky.

1770

1771.22mMD (1180.0mTVD)  
38.18°inc 285.68°az

(1183.9)

1780

98 / 1 / 1 / Tr

1790

(1199.7)

1800

500

5

5

5

5

50

500

5K

100

1K

10K

100K

1000K

1800.06mMD (1202.8mTVD)  
37.61°inc 285.36°az

1810

CALCAREOUS CLAYSTONE:lt gy-med gy,silty,mod calc,tr dissempyr,rr foss frag,frm-mod hd, sbbiky-biky.

(1215.6)

1820

97 / 2 / 1 / Tr

1830

1828.75mMD (1225.7mTVD)  
36.76°inc 285.25°az

(1231.6)

1840

WOB:5-10  
TDRPM:110  
MMRPM:172  
SPP:2510  
FLW:590

1850

1857.65mMD (1249.0mTVD)  
35.84°inc 284.67°az

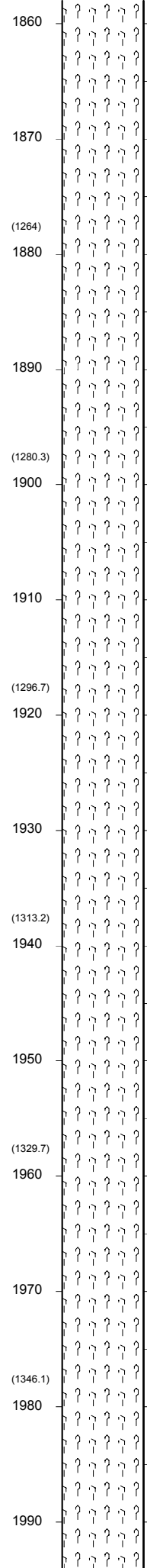
MW: 9.90

(1247.7)

FV: 69  
PV: 26  
YP: 42  
Gel: 11/19  
WI: 2.9  
pH: 8.9  
Cl: 46.0K

26-11-05

WOB: 10-35  
TDRPM: 110  
MMRPM: 172  
SPP: 2550  
FLW: 590



96 / 1 / 1 / 2 / Tr

1886.53mMD (1272.4mTVD)  
35.35°inc 284.85°az

98 / 1 / 1 / Tr

1914.92mMD (1295.7mTVD)  
34.36°inc 283.85°az

98 / 1 / 1 / Tr

1943.71mMD (1319.5mTVD)  
34.09°inc 283.70°az

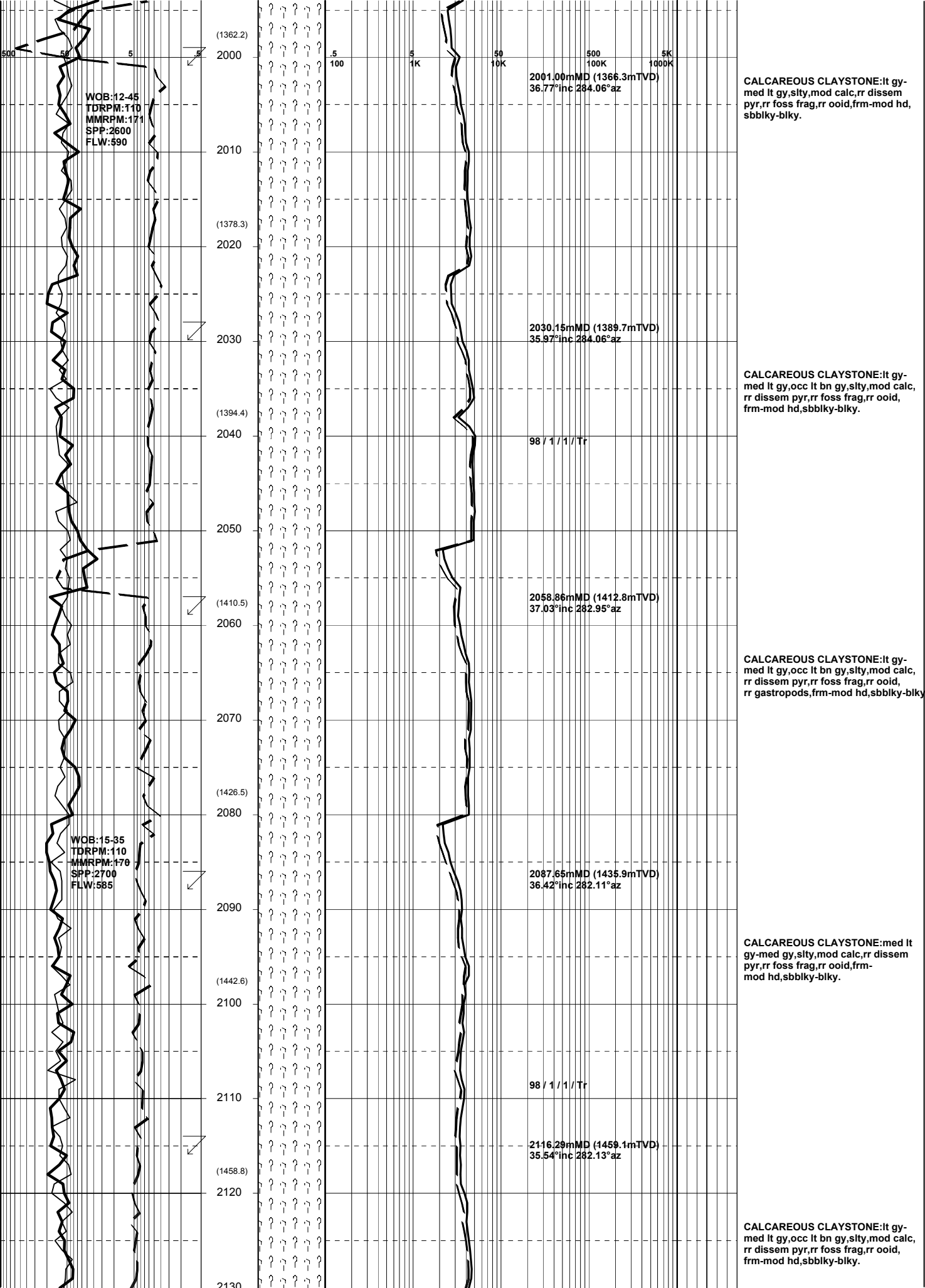
1972.67mMD (1343.4mTVD)  
35.57°inc 283.88°az

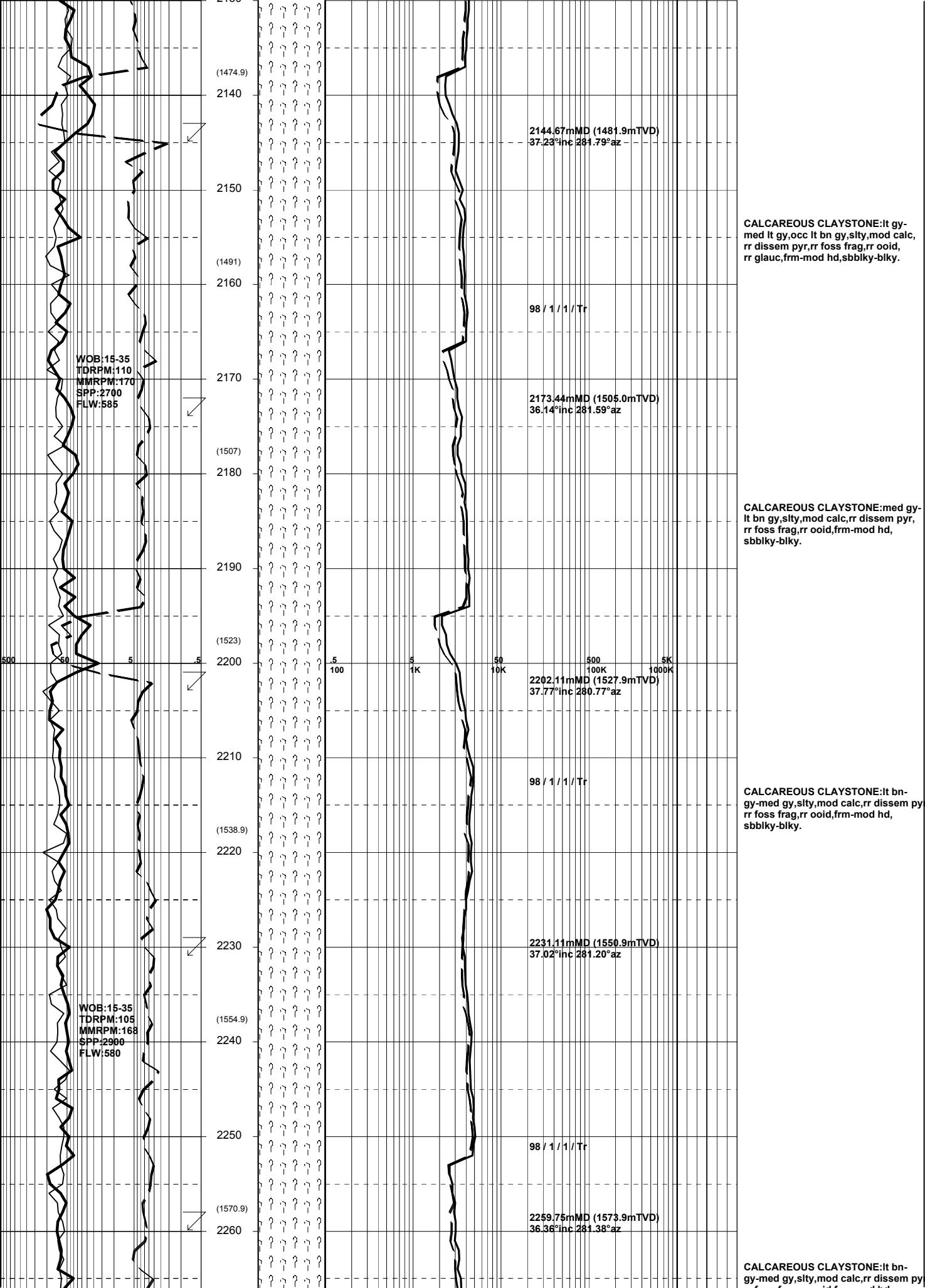
98 / 1 / 1 / Tr

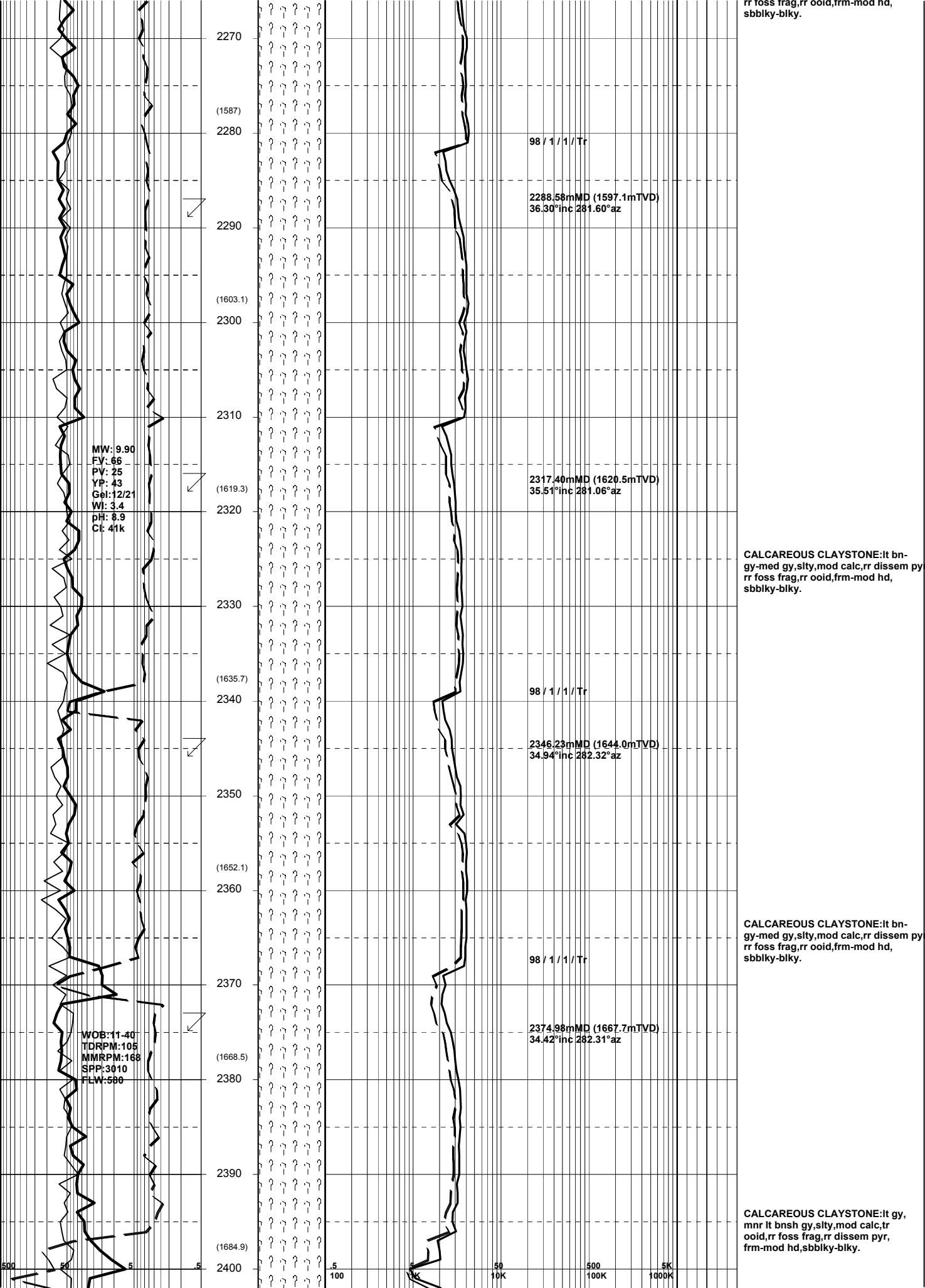
**CALCAREOUS CLAYSTONE:**It gy-med gy,silty,mod calc,tr dissem pyr,rr foss frag,frm-mod hd, sbbiky-biky.

**CALCAREOUS CLAYSTONE:**It gy-med It gy,silty,mod calc,rr dissem pyr,rr foss frag,rr ooid,frm-mod hd, sbbiky-biky.

**CALCAREOUS CLAYSTONE:**It gy-med It gy,silty,mod calc,rr dissem pyr,rr foss frag,rr ooid,frm-mod hd, sbbiky-biky.







rr foss frag,rr ooid,frm-mod hd, sbbiky-biky.

2270

(1587)

2280

98 / 1 / 1 / Tr

2288.58mMD (1597.1mTVD)  
36.30°inc 281.60°az

2290

(1603.1)

2300

2310

MW: 9.90  
FV: 66  
PV: 25  
YP: 43  
Gel: 12/21  
WI: 3.4  
pH: 8.9  
Ct: 41k

(1619.3)

2320

2317.40mMD (1620.5mTVD)  
35.51°inc 281.06°az

2330

CALCAREOUS CLAYSTONE:lt bn-gy-med gy,sity,mod calc,rr dissem pyr,rr foss frag,rr ooid,frm-mod hd, sbbiky-biky.

(1635.7)

2340

98 / 1 / 1 / Tr

2346.23mMD (1644.0mTVD)  
34.94°inc 282.32°az

2350

(1652.1)

2360

CALCAREOUS CLAYSTONE:lt bn-gy-med gy,sity,mod calc,rr dissem pyr,rr foss frag,rr ooid,frm-mod hd, sbbiky-biky.

2370

98 / 1 / 1 / Tr

2374.98mMD (1667.7mTVD)  
34.42°inc 282.31°az

(1668.5)

2380

WOB:11.40  
TDRPM:105  
MMRPM:168  
SPP:3010  
FLW:580

2390

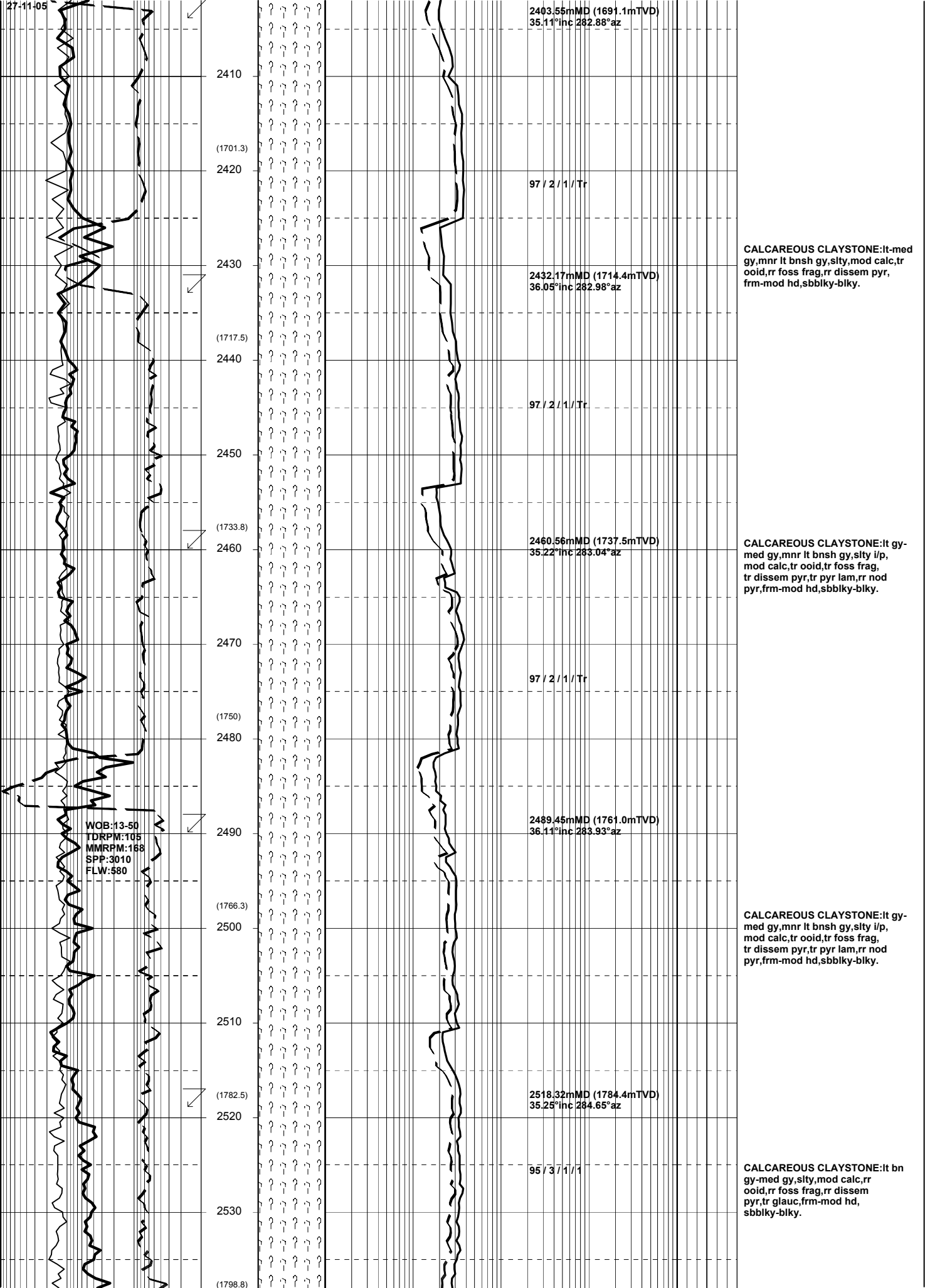
CALCAREOUS CLAYSTONE:lt gy,mnr lt bnsh gy,sity,mod calc,tr ooid,rr foss frag,rr dissem pyr,frm-mod hd,sbbiky-biky.

(1684.9)

2400

5 50 500 5K  
100 10K 100K 1000K





2410  
(1701.3)

2403.55mMD (1691.1mTVD)  
35.11°inc 282.88°az

97 / 2 / 1 / Tr

2420  
(1717.5)

2432.17mMD (1714.4mTVD)  
36.05°inc 282.98°az

97 / 2 / 1 / Tr

2430  
(1733.8)

2460.56mMD (1737.5mTVD)  
35.22°inc 283.04°az

97 / 2 / 1 / Tr

2440  
(1750)

2489.45mMD (1761.0mTVD)  
36.11°inc 283.93°az

WQB:13-50  
TDRPM:105  
MMRPM:168  
SPP:3010  
FLW:580

2450  
(1766.3)

2490  
(1782.5)

2518.32mMD (1784.4mTVD)  
35.25°inc 284.65°az

95 / 3 / 1 / 1

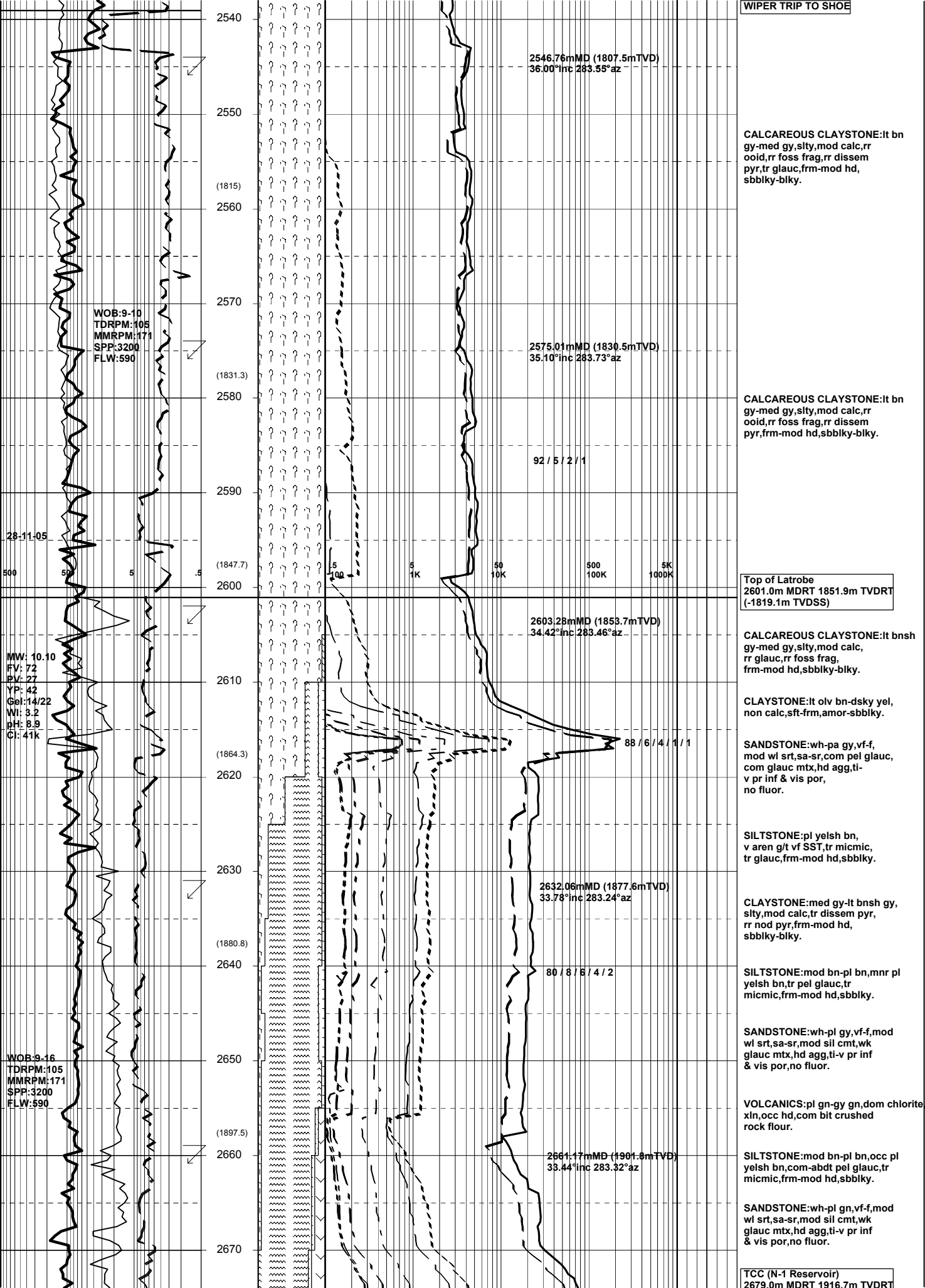
2460  
(1798.8)

**CALCAREOUS CLAYSTONE:lt-med gy,mnr lt bnsh gy,slty,mod calc,tr ooid,rr foss frag,rr dissem pyr,frm-mod hd,sbblky-blky.**

**CALCAREOUS CLAYSTONE:lt gy-med gy,mnr lt bnsh gy,sity lp,mod calc,tr ooid,rr foss frag,rr dissem pyr,rr nod pyr,frm-mod hd,sbblky-blky.**

**CALCAREOUS CLAYSTONE:lt gy-med gy,mnr lt bnsh gy,sity lp,mod calc,tr ooid,rr foss frag,rr dissem pyr,rr nod pyr,frm-mod hd,sbblky-blky.**

**CALCAREOUS CLAYSTONE:lt bn gy-med gy,sity,mod calc,rr ooid,rr foss frag,rr dissem pyr,rr glauc,frm-mod hd,sbblky-blky.**



2546.76mMD (1807.5mTVD)  
36.00°inc 283.55°az

CALCREOUS CLAYSTONE:lt bn gy-med gy,silty,mod calc,rr ooid,rr foss frag,rr dissem pyr,tr glauc,frm-mod hd, sbbiky-blky.

WOB:9-10  
TDRPM:105  
MMRPM:171  
SPP:3200  
FLW:590

2575.01mMD (1830.5mTVD)  
35.10°inc 283.73°az

CALCREOUS CLAYSTONE:lt bn gy-med gy,silty,mod calc,rr ooid,rr foss frag,rr dissem pyr,frm-mod hd,sbbiky-blky.

92 / 5 / 2 / 1

28-11-05

Top of Latrobe  
2601.0m MDRT 1851.9m TVDRT  
(-1819.1m TVDSS)

2603.28mMD (1853.7mTVD)  
34.42°inc 283.46°az

CALCREOUS CLAYSTONE:lt bnsh gy-med gy,silty,mod calc, rr glauc,rr foss frag, frm-mod hd,sbbiky-blky.

CLAYSTONE:lt olv bn-dsky yel, non calc,sft-frm,amor-sbbiky.

MW: 10.10  
FV: 72  
PV: 27  
YP: 42  
Gel:14/22  
WI: 3.2  
pH: 8.9  
CI: 41k

SANDSTONE:wh-pa gy,vf-f, mod wl srt,sa-sr,com pel glauc, com glauc mtx,hd agg,ti-v pr inf & vis por, no fluor.

88 / 6 / 4 / 1 / 1

SILTSTONE:pl yelsh bn, v aren g/t vf SST,tr micmic, tr glauc,frm-mod hd,sbbiky.

2632.06mMD (1877.6mTVD)  
33.78°inc 283.24°az

CLAYSTONE:med gy-lt bnsh gy, silty,mod calc,tr dissem pyr, rr nod pyr,frm-mod hd, sbbiky-blky.

SILTSTONE:mod bn-pl bn,mnr pl yelsh bn,tr pel glauc,tr micmic,frm-mod hd,sbbiky.

80 / 8 / 8 / 4 / 2

SANDSTONE:wh-pl gy,vf-f,mod wl srt,sa-sr,mod sil cmt,wk glauc mtx,hd agg,ti-v pr inf & vis por,no fluor.

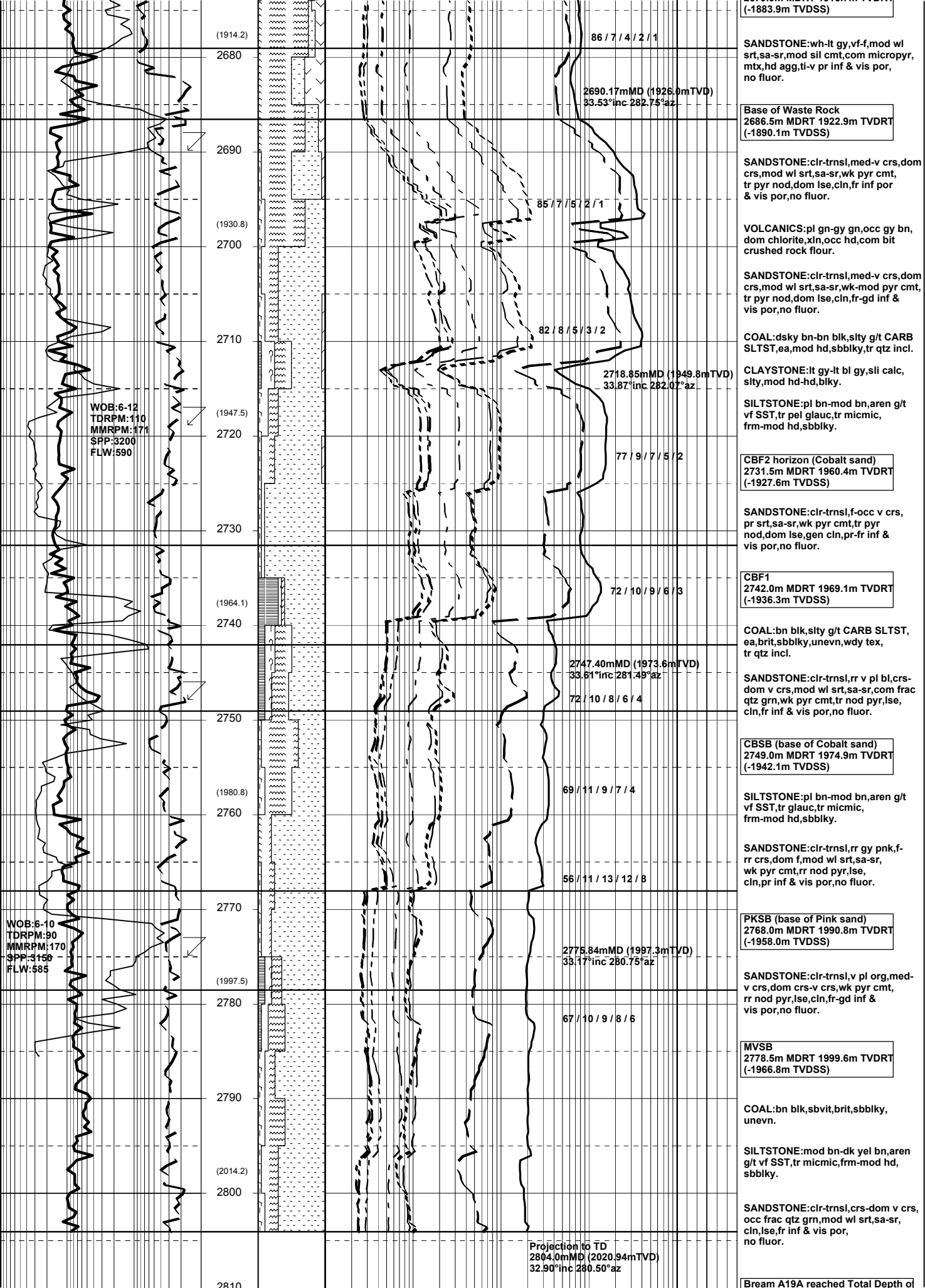
VOLCANICS:pl gn-gy gn,dom chlorite xln,occ hd,com bit crushed rock flour.

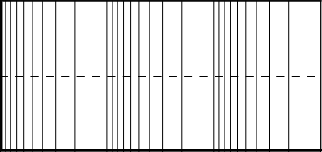
2661.17mMD (1901.8mTVD)  
33.44°inc 283.32°az

SILTSTONE:mod bn-pl bn,occ pl yelsh bn,com-abdt pel glauc,tr micmic,frm-mod hd,sbbiky.

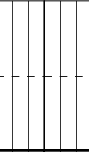
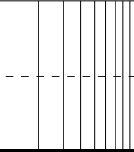
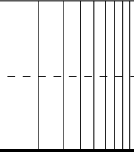
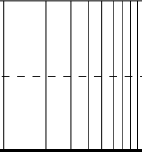
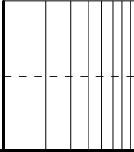
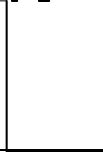
SANDSTONE:wh-pl gy,vf-f,mod wl srt,sa-sr,mod sil cmt,wk glauc mtx,hd agg,ti-v pr inf & vis por,no fluor.

TCC (N-1 Reservoir)  
2679.0m MDRT 1916.7m TVDRT





2820



2804.0m MDRT 2020.9m TVDRT  
at 14:45 hours on 28-11-2005